



2018 Updates to National Standards

1






FCDS ANNUAL CONFERENCE
ORLANDO, FLORIDA
7/26/2017

STEVEN PEACE, CTR







- ICD-O-3 New Histology Codes
- ICD-O-3 Behavior Changes
- Solid Tumor MPH Rules & DB
- AJCC 8th edition
- SSF Items - Major Change
- New Treatment Items





- SS2018 & EOD 2018
- Gene Testing
- Biomarkers
- CAP Templates
- EDITSv18
- 'yp' & 'yc' TNM

CDC & Florida DOH Attribution

2



“We acknowledge the Centers for Disease Control and Prevention, for its support of the Florida Cancer Data System, and the printing and distribution of the materials for the 2015-2016 FCDS Webcast Series under cooperative agreement DP003872-03 awarded to the Florida Department of Health. The findings and conclusions in this series are those of the author(s) and do not necessarily represent the official position of the Centers for Disease Control and Prevention”.

FCDS would also like to acknowledge the Florida Department of Health for its support of the Florida Cancer Data System, including the development, printing and distribution of materials for the 2015-2016 FCDS Webcast Series under state contract CODJU. The findings and conclusions in this series are those of the author(s) and do not necessarily represent the official position of the Florida Department of Health.

Presentation Outline

3

- 2018 – A Year for Major Changes to Data Standards
- Major Changes to Site-Specific Data Items
- Many New Treatment Data Items
- Many New Staging Data Items
- 2018 Solid Tumor Rules
- 2018 Solid Tumors Database
- ICD-O-3 Code & Behavior Updates
- Updates to Reportable Cancers List
- Cancer Staging Updates
 - AJCC 8th ed. Implementation
 - SEER EOD 2018
 - SS2018
- EDITS v18
- Medicare Beneficiary Identifier (MBI) replaces SSN for CMS Billing



A Year for Major Changes to Data Standards

4

- ICD-O-3 Updates
- 2018 Solid Tumor Rules
- Cancer Staging – AJCC, SS2018, EOD 2018
- New Radiation Therapy Treatment Items
- Harmonization of New Codes, New Rules, Old Rules
 - MPH Rules and AJCC Chapters - ongoing
 - AJCC Chapter - Site/Histology Inclusion Tables
 - Site/Histology Validation List for EDITS – FCDS FORCE
 - New and Old Site Specific Data Items (139 New Data Items)
 - Coding Instructions - various
 - AJCC TNM DLL
 - EDITSv18
- FORDS Revision = StORE
- FORDS-to-StORE Code Conversions

Major Changes to Site-Specific Data Items

5

New Data Items – Old SSFs New Codes & Instructions

- o FIGO Stage
- o Lymph Nodes Laterality-Vulva
- o Lymph Nodes Laterality-Vagina
- o Lymph Nodes Assessment Method Para-aortic-Vagina
- o Lymph Nodes Assessment Method Pelvic-Vagina
- o Lymph Nodes Assessment Method Femoral-Vagina
- o Lymph Nodes Distant: Mediastinal, Scalene SSF 6-Vagina
- o Lymph Nodes Distant: Mediastinal, Scalene SSF 7-Vagina
- o Peritoneal Cytology-Corpus
- o Pelvic Nodes Number Positive SSF3-Corpus
- o Pelvic Nodes Number Positive SSF4-Corpus
- o Para-aortic Nodes Number Positive SSF 5-Corpus
- o Para-aortic Nodes Number Examined SSF 6-Corpus
- o CA-125 Pretreatment Value SSF1-Ovary

New Data Items – Old SSFs New Codes & Instructions

- o Prostate Pathological Extension SSF3-Prostate
- o Gleason's Pattern Clinical SSF7-Prostate
- o Gleason's Clinical Score SSF8-Prostate
- o Gleason Pathological Patterns SSF9-Prostate
- o Gleason Pathological Score SSF10-Prostate
- o Gleason Tertiary Pattern SSF11-Prostate
- o Number of Cores Positive SSF12-Prostate
- o Number of Cores Examined SSF13-Prostate
- o AFP Pre-Orchiectomy Range SSF7-Testis
- o hCG Pre-Orchiectomy Range SSF9-Testis
- o LDH Pre-Orchiectomy Range SSF10-Testis
- o AFP Post-Orchiectomy Range SSF13-Testis
- o hCG Post-Orchiectomy Range SSF15-Testis
- o LDH Post-Orchiectomy Range SSF16-Testis

New Manual to Include ALL Site-Specific Data Items
New Optional Prognostic Data Items Not Approved Yet
Description of Test, Instructions and Codes

Major Changes to Site-Specific Data Items

6

New Site-Specific Data Items – Required for Staging

PROPOSED Full Data Item Name	PROPOSED NAACCR Data Item Name	Chapter Assignment
Adenopathy	Adenopathy	
Alpha Fetoprotein (AFP) Post-Orchiectomy Lab Value	AFP Post-Orch Lab Value	
Alpha Fetoprotein (AFP) Post-Orchiectomy Range	AFP Post-Orch Range	
Alpha Fetoprotein (AFP) Pre-Orchiectomy Lab Value	AFP Pre-Orch Lab Value	
Alpha Fetoprotein (AFP) Pre-Orchiectomy Range	AFP Pre-Orch Range	
Alpha Fetoprotein (AFP) Pretreatment Interpretation	AFP PreTX Interpretation	Liver
Alpha Fetoprotein (AFP) Pretreatment Lab Value	AFP PreTX Lab Value	Liver
Adenoid Cystic Carcinoma - Presence of Basaloid Pattern	Basaloid Pattern	
Anemia	Anemia	
Bilirubin Pretreatment Total Lab Value	Bilirubin PreTX LabValue	Liver
Bilirubin Pretreatment Unit of Measure	Bilirubin PreTX Meas	Liver
Bone Invasion	Bone Invasion	Soft Tissue Sarcomas
Carbohydrate Antigen 125 (CA-125) Pretreatment Lab Value	CA-125 PreTX Lab Value	
Carcinoembryonic Antigen (CEA) Pretreatment Interpretation	CEA PreTX Interpretation	Colon and Rectum
Carcinoembryonic Antigen (CEA) Pretreatment Lab Value	CEA PreTX Lab Value	Colon and Rectum
Chromogranin A (CgA) Pretreatment Lab Value	CgA PreTX Lab Value	NET
Chromosome 1p: Loss of Heterozygosity (LOH)	Chromosome 1p: LOH	
Chromosome 3 Status	Chromosome 3 Status	
Chromosome 8q Status	Chromosome 8q Status	
Chromosome 19q: Loss of Heterozygosity (LOH)	Chromosome 19q: LOH	
Circumferential Resection Margin (CRM)	CircumResecMargin	Colon and Rectum

Major Changes to Site-Specific Data Items

7

Modified Site-Specific Data Items – Required for Staging

Source of SSF (Based on 7th Edition)	SSF Name (Based on AJCC 7th Edition)	Applicable 8th Edition Chapter
n/a	n/a	79.5
Testis, SSF #13	Pre-Orchiectomy Alpha Fetoprotein (AFP) Lab Value	Testis (#12)
Testis, SSF #12	Pre-Orchiectomy Alpha Fetoprotein (AFP) Range	59
Testis, SSF #6	Post-Orchiectomy Alpha Fetoprotein (AFP) Lab Value	59
Testis, SSF #7	Post-Orchiectomy Alpha Fetoprotein (AFP) Range	59
Liver, SSF #1	Alpha Fetoprotein (AFP) Interpretation	22, 23
Liver, SSF#3	Alpha Fetoprotein (AFP) Lab Value	22
Lacrimal Gland, SSF #6	Adenoid Cystic Carcinoma - Presence of Basaloid Pattern	69
n/a	n/a	79.5
Liver, SSF #7	Total Bilirubin Unit of Measure	2
Liver, SSF #6	Total Bilirubin Value	2
Soft Tissue #3	Bone Invasion	40-42, 44, 45
Ovary, SSF #1	Carbohydrate Antigen 125 (CA-125)	55
Colon and Rectum, SSF #3	Carcinoembryonic Antigen (CEA) Lab Value	17, 18, 19, 20, 26, 27, 28, 74
Colon and Rectum, SSF #1	Carcinoembryonic Antigen (CEA)	17, 18, 19, 20, 26, 27, 28, 74
NET Stomach, SSF #11	Serum Chromogranin A (CgA) Lab Value	29, 30, 34, 37
Brain SSF#5	Chromosome 1p: Loss of Heterozygosity (LOH)	
Melanoma Ciliary Body, SSF#5	Chromosome 3 Status	67
Melanoma Ciliary Body, SSF#7	Chromosome 8q Status	67
Brain, SSF #6	Chromosome 19q: Loss of Heterozygosity (LOH)	
Colon and Rectum, SSF #6	Circumferential Resection Margin (CRM)	20
Prostate, SSF #17	Number of Core Positive	58

Many New Prognostic Site-Specific Fields

8

- HER2 ISH Dual Probe Ratio, new Draft, Breast 8th edition, CAP guidelines
- HER2 ISH Dual Probe Copy Number
- HER2 ISH Single Probe Copy Number
- Lymph Nodes Size of Metastasis, Head and Neck (Common SSF), SSF#1
- Bilirubin Pretreatment Total Lab Value, Liver, SSF #6
- Measured Basal Diameter, Uveal Melanomas, SSF #2
- Measured Thickness, Uveal Melanomas, SSF #3
- Extranodal Extension Clinical, Penis, SSF # 17
- Extranodal Extension Pathological, Penis, SSF # 17
- Microvascular Density, Uveal Melanomas, SSF #13
- Adenoid Cystic Basaloid Pattern, Lacrimal Gland, SSF #6
- Circumferential or Radial Resection Margin, Colon and Rectum, SSF #6
- Oncotype Dx Recurrence Score-Invasive, Draft, Breast 8th edition, CAP guidelines
- Oncotype Dx Recurrence Score-DCIS, Draft, Breast 8th edition, CAP guidelines
- Oncotype Dx Risk Level-Invasive, Draft, Breast 8th edition, CAP guidelines
- Oncotype Dx Risk Level-DCIS, Draft, Breast 8th edition, CAP guidelines
- Isolated Tumor Cells (ITC) in Regional Lymph Node(s), Merkel Cell Skin, SSF #18
- Profound Immune Suppression, Merkel Cell Skin, SSF #22
- Microsatellite Instability, Colon and Rectum, SSF #7
- KRAS, Colon and Rectum, SSF #9
- Kidney Tumor Extension, Kidney, SSF#1
- Major vein Involvement, Kidney, SSF#2
- Ipsilateral Adrenal Gland Involvement, Kidney, SSF#3
- Sarcomatoid Features, Kidney, SSF#4
- JAK2, Heme Retic, SSF# 1

Many New Treatment Data Items

9

Radiation	
Phase I Radiation Primary Treatment Volume (length 2)	
Phase I Radiation to Draining Lymph Nodes (length 2)	
Phase I Radiation Treatment Modality (length 2)	
Phase I Radiation External Beam Planning Technique (length 2)	
Phase I Dose Per Fraction (Session) (length 5)	
Phase I Number of Fractions (Sessions) (length 3)	
Phase I Total Dose (length 6)	
Phase II Radiation Primary Treatment Volume (length 2)	
Phase II Radiation to Draining Lymph Nodes (length 2)	
Phase II Radiation Treatment Modality (length 2)	
Phase II Radiation External Beam Planning Technique (length 2)	
Phase II Dose Per Fraction (Session) (length 5)	
Phase II Number of Fractions (Sessions) (length 3)	
Phase II Total Dose (length 6)	
Phase III Radiation Primary Treatment Volume (length 2)	
Phase III Radiation to Draining Lymph Nodes (length 2)	
Phase III Radiation Treatment Modality (length 2)	
Phase III Radiation External Beam Planning Technique (length 2)	
Phase III Dose Per Fraction (Session) (length 5)	
Phase III Number of Fractions (Sessions) (length 3)	
Phase III Total Dose (length 6)	
Number of Phases of Radiation Treatment to this Volume (length 2)	
Radiation Discontinued Early (Length 2)	
Total Dose (length 6)	

CONVERSION Required

STORE		
FORDS Codes	StORE Code	Definition
00	00	No Radiation Treatment
21	01	External beam, photons, low energy
22, 23, 24, 25, 26, 27, 31, 41, 42, 43	02	External beam, photons, megavoltage
40	03	External beam, protons
28	04	External beam, electrons
30	05	External beam, neutrons
20	06	External beam, carbon ions
29	09	External beam, NOS
51	10	Brachytherapy, intracavitary, LDR
52	11	Brachytherapy, intracavitary, HDR
53	12	Brachytherapy, Interstitial, LDR
54	13	Brachytherapy, Interstitial, HDR
	14	Brachytherapy, electronic
50	19	Brachytherapy, NOS
55*	20	Radioisotopes, Radium-232
61	21	Radioisotopes, Strontium-.89
62	22	Radioisotopes, Strontium-90
55, 60	29	Radioisotopes, NOS
98	98	Other, NOS
99	99	Unknown

FORDS to StORE Code Conversions

10

FORDS Code	Label	STORE Volume	STORE Nodes
00	No radiation treatment	00	00
01	Eye/orbit	10	00
02	Pituitary	11	00
03	Brain (NOS)	12	00
04	Brain (limited)	13	00
05*	Head and neck (NOS)	29	99
06*	Head and neck (limited)*	29	99
07	Glottis	23	00
08	Salivases	24	99
09	Parotid	25	99
10	Chest wall (NOS)	39	99
11	Lung (limited)	30	99
12	Esophagus	20	99
13	Stomach	51	99
14	Liver	56	00
15	Pancreas	58	99
16	Kidney	62	00
17	Abdomen (NOS)	59	00
18	Breast	40	00
19	Breast lymph nodes	40	04
20	Chest wall	42	00
21	Chest wall lymph nodes	42	04
22	Mantle, Mini-mantle	03	00
23	Lower extended field	07	00
24	Spine	81	00
25	Skull	80	00
26	Ribs	83	00
27	Hip	84	00

Old Code	New Code	Label
	00	No radiation treatment
	01	Neck lymph node regions
	02	Thoracic lymph node regions
	03	Neck and thoracic lymph node regions
	04	Breast/ Chestwall lymph node regions
	05	Abdominal lymph nodes
	06	Pelvic lymph nodes
	07	Abdominal and pelvic lymph nodes
	09	Lymph node region, NOS
1	10	Eye/orbit/optic nerve
2	11	Pituitary
3	12	Brain
4	13	Brain (Limited)
40	14	Spinal cord
	20	Nasopharynx
	21	Oral Cavity
	22	Oropharynx
	23	Larynx (glottis) or hypopharynx
8	24	Sinuses/Nasal tract
9	25	Parotid or other salivary glands
50	26	Thyroid
5	29	Head and neck (NOS)
	30	Lung or bronchus
	31	Mesothelium
	32	Thymus

FORDS to StORE Code Conversions

11

FORDS Code	Label	StORE Volume	StORE Nodes
00	No radiation treatment	00	00
01	Eye/orbit	10	00
02	Pituitary	11	00
03	Brain (NOS)	12	00
04	Brain (limited)	13	00
05*	Head and neck (NOS)	29	99
06*	Head and neck (limited)	29	99
07	Glands	23	00
08	Sinuses	24	99
09	Parotid	25	99
10	Chest/hang (NOS)	39	99
11	Lung (limited)	30	99
12	Esophagus	50	99
13	Stomach	51	99
14	Liver	56	00
15	Pancreas	58	99
16	Kidney	62	00
17	Abdomen (NOS)	59	00
18	Breast	40	00
19	Breast/lymph nodes	40	04
20	Chest wall	42	00
21	Chest wall/lymph nodes	42	04
22	Mantle, Mini-mantle	03	00
23	Lower extended field	07	00
24	Spine	81	00
25	Skull	80	00
26	Ribs	83	00
27	Hip	84	00

For FORDS Codes 5			
Site Codes	StORE Volume		StORE Nodes
C11.0-C11.9	20	Nasopharynx	09
C01.9, C05.1-C5.9, C09.0, C09.9, C10.0-C10.9,	22	Oropharynx	09
C00.0-C00.9, 02.0-04.9, C05.0, C06.0-C06.9	21	Oral Cavity	09
C12.9, C13.0-C13.9, C32.0-C32.9	23	Larynx or hypopharynx	09

For FORDS Codes 6			
Site Codes	StORE Volume		StORE Nodes*
C11.0-C11.9	20	Nasopharynx	00
C01.9, C05.1-C5.9, C09.0-C09.9, C10.0-C10.9,	22	Oropharynx	00
C00.0-C00.9, 02.0-04.9, C05.0, C06.0-C06.9	21	Oral Cavity	00
C12.9, C13.0-C13.9, C32.0-C32.9	23	Larynx or hypopharynx	00
		*Could argue for 99	

For FORDS Code 29			
Site Codes	StORE Volume		StORE Nodes*
C19.9, C20.9	54	Rectum	06
C21.0-C21.8	55	Anus	06
C67.0-C67.9	60	Bladder	06
C61.9	64	Prostate and pelvis	06
C53.0-C55.9	71	Uterus or Cervix	06
C66.9	63	Ureter	06
C51.0-C51.9	72	Vulva	06
C52.9	73	Vagina	06

FORDS to StORE Code Conversions

12

FORDS Modality Codes	StORE Code	Label
00	00	No radiation treatment
21	01	Low energy x-ray/photon therapy
28	02	2-D therapy
32	03	Conformal or 3-D conformal therapy
31	04	Intensity modulated therapy
41	05	Stereotactic radiotherapy or radiosurgery, NOS
42	06	Stereotactic radiotherapy or radiosurgery, robotic.
43	07	Stereotactic radiotherapy or radiosurgery, Gamma Knife®
	08	CT-guided online adaptive therapy
	09	MR-guided online adaptive therapy
20, 22-27, 29, 30, 40	10	External beam, NOS
80-98	11	Other, NOS
50-62	98	Not Applicable
99	99	Unknown

2018 Solid Tumor Rules

13

- Text Only – no flowchart or matrix
- Updates to Existing Solid Tumor Rules
- Takes into account problems from 2007 MPH Rules
- Takes into account WHO Classification Updates
- Takes into account new WHO Classification, 4th ed.

2018 Solid Tumors Database

14

- Similar to the Hematopoietic Database
- Information about Solid Tumors beyond MPH Rules
- Expanded Histology Tables
- WHO Grade Tables (Brain Site Group)
- Abstractor Notes

2018 Solid Tumors Database

15

- Genetics Data & Biomarkers
- Treatment(s)
- Abstractor Notes
- Signs & Symptoms
- Diagnostic Exams
- Recurrence & Metastasis
- Epidemiology & Mortality

STDB Example: Metaplastic Ca



Name
Metaplastic carcinoma

ICD-O-3 Morphology
8575/3 [Effective 2001 and later](#)

Reportable
for cases diagnosed 2001 and later

Help me code for diagnosis year: 2001 and later

Site Category
Breast


Definition
Metaplastic carcinoma encompasses a group of neoplasms characterized by differentiation of the neoplastic epithelium into squamous cells and/or mesenchymal-looking elements, including but not restricted to spindle, chondroid, osseous, and rhabdomyoid cells. These neoplasms may be either entirely composed of metaplastic elements, or a complex admixture of carcinoma and metaplastic areas.

Differential diagnosis:

- Myoepithelial carcinoma: may have ducts with prominent myoepithelial cells at periphery, diffusely S100+
- Myofibroblastic tumors
- Phyllodes tumor
- Primary breast sarcoma: no epithelial elements or keratin+ elements





STDB Example: Metaplastic Ca



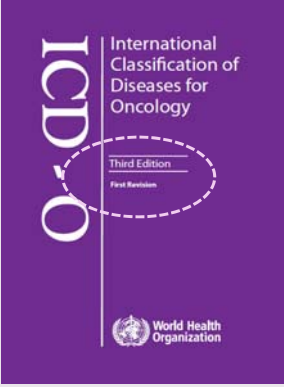
Subgroups:
 Low-grade adenosquamous carcinoma (8570/3)
 Fibromatosis-like metaplastic carcinoma (8572/3)
 Squamous cell carcinoma (8070/3)
 Spindle cell carcinoma (8032/3)
 Carcinoma with mesenchymal differentiation (8571/3)
 Myoepithelial carcinoma (8982/3)

Alternate Names
 Carcinoma with other types of mesenchymal differentiation

ICD-O-3 Code & Behavior Updates

18



+

WHO Classification of Tumors New or Revised Since 2010
Digestive System (2010)
Breast (2012)
Soft Tissue and Bone (2013)
Female Reproductive Organs (2014)
Lung, Pleura, Thymus & Heart (2015)
Urinary System & Male Genital (2016)
Central Nervous System (2016 revision)
Hematopoietic & Lymphoid (2016 revision)
Head & Neck (2017)

<http://codes.iarc.fr/usingicdo.php>

ICD-O-3 Code & Behavior Updates

19

International Agency for Research on Cancer
World Health Organization

International Classification of Diseases for Oncology
ICD-O-3 online

ABOUT ICD-O USING ICD-O-3 ONLINE MORPHOLOGICAL CODES TOPOGRAPHICAL CODES

You are here: Home / Using ICD-O-3 online

ICD-O-3 ONLINE

INTERNATIONAL CLASSIFICATION OF DISEASES FOR ONCOLOGY
ICD-O-3 ONLINE

USING ICD-O-3 ONLINE

The International Classification of Diseases for Oncology (ICD-O) is a dual classification, with coding systems for both topography and morphology.

The **topography** code describes the anatomical site of origin of the neoplasm and, while it uses the same categories as in the neoplasm section of Chapter II of the International Statistical Classification of Diseases and Related Health Problems, 10th Revision (ICD-10), **some of the individual codes are different**. The code always has a prefix of "C", followed by a three-digit number that indicates the site (two digits) and the subsite (one digit), separated by a decimal point. For example, in C18.4, the C18 indicates that the site is the colon and the 4 indicates that the subsite is the transverse colon.

The **morphology** code describes the characteristics of the tumour itself, including its cell type and biological activity. The code is composed of four digits that indicate the cell type or histology and one digit that indicates the behaviour. The first four digits are separated from the last (behaviour) digit by a forward slash (/). The behaviour digit can be 0 (benign), 1 (uncertain behaviour), 2 (carcinoma in situ), 3 (malignant, primary site), 6 (malignant, metastatic site), or 9 (malignant, uncertain whether primary or metastatic site).

ICD-O-3 Code & Behavior Updates

20

International Agency for Research on Cancer
World Health Organization

International Classification of Diseases for Oncology
ICD-O-3 online

ABOUT ICD-O USING ICD-O-3 ONLINE MORPHOLOGICAL CODES TOPOGRAPHICAL CODES

You are here: Home / Morphological Codes

- ICD-O-3.1 (2011)
- ICD-O-3 (2000)
- Updates 2011

ICD-O-3 ONLINE

INTERNATIONAL CLASSIFICATION OF DISEASES FOR ONCOLOGY INCLUDING UPDATES AS AT SEP 01 2011, APPROVED BY THE IARC/WHO COMMITTEE FOR ICD-O-3

8000/0 Neoplasm, benign
Tumor, benign
Unclassified tumor, benign

8000/1 Neoplasm, uncertain whether benign or malignant
Neoplasm, NOS
Tumor, NOS
Unclassified tumor, uncertain whether benign or malignant
Unclassified tumor, borderline malignancy

8000/3 Neoplasm, malignant

ICD-O-3 Code & Behavior Updates

21

- 24+ NEW proposed ICD-O Codes
- 16+ Changes to Behavior Codes
- 54+ Preferred Names / Alternate Names
- Previously non-reportable GI terms now Reportable
- Thymoma – no longer must state “malignant”

ICD-O-3 Updates - Breast

22

Change	Cod	Description
New behavior code	8507/3	Invasive micropapillary carcinoma
New behavior code	8983/3	Adenomyoepithelioma with carcinoma
New code	8519/2	Pleomorphic lobular carcinoma in situ
New behavior code	8460/2	Serous borderline tumor-micropapillary variant/
New behavior code	8460/2	Non-invasive low grade serous carcinoma
New related term	8503/2	Intraductal papilloma with ductal carcinoma in situ
New code	8509/2	Solid papillary carcinoma in-situ
New code	8509/3	Solid papillary carcinoma with invasion
New related term	8503/3	Invasive papillary carcinoma

ICD-O-3 Updates - Lung

23

Change	Cod	Description
New related term	8551/3	Acinar adenocarcinoma
New behavior code	8250/2	Minimally invasive adenocarcinoma, non-mucinous
New code	8257/3	Minimally invasive adenocarcinoma, mucinous
New code	8023/3	NUT carcinoma
New behavior code	8842/3	Pulmonary Myxoid sarcoma with EWSR1-CREB1 translocation
New code	9086/3	Germ cell tumor with associated hematological malignancy
New related term	8250/3	Lepidic adenocarcinoma
New related term	8253/3	Invasive mucinous adenocarcinoma
New related term	8254/3	Mixed invasive mucinous & non-mucinous adenocarcinoma
New term/behavior	8410/2	Adenocarcinoma in-situ, non- mucinous
New term/behavior	8253/2	Adenocarcinoma in-situ, mucinous
See comment	8140/2	Adenocarcinoma in-situ
New code	8265/3	Micropapillary adenocarcinoma
New related term	8580/3	Metaplastic thymoma
New related term	8581/3	Type A thymoma
New related term	8582/3	Type AB thymoma
New related term	8583/3	Type B1 thymoma
New related term	8584/3	Type B2 thymoma
New related term	8585/3	Type B3 thymoma
New related term	8580/3	Sclerosing thymoma

ICD-O-3 Updates – GI Tract

24

Change	Cod	Description
New related term	8503/3	Intracystic papillary neoplasm with associated invasive carcinoma (C23.9)
New related term	8453/3	Intraductal papillary mucinous neoplasm (IPMN) with associated carcinoma

ICD-O-3 Updates – Soft Tissue Sarcoma

25

Change	Cod	Description
New behavior code	8825/3	Low-grade myofibroblastic sarcoma
New code	9542/3	Epithelioid malignant peripheral nerve sheath tumor
New behavior code	8842/3	Ossifying fibromyxoid tumor, malignant
New code	8714/3	PEComa, NOS, malignant
New code	9137/3	Intimal sarcoma
New behavior code	8811/1	Myxoinflammatory fibroblastic sarcoma
New related term	8823/3	Fibrosarcomatous dermatofibrosarcoma protuberans
New related term	8840/3	Low-grade fibromyxoid sarcoma
New related term	8840/3	Sclerosing epithelioid fibrosarcoma
New related term	8802/3	Undifferentiated high-grade pleomorphic sarcoma

ICD-O-3 Updates - GYN

26

Change	Cod	Description
New code	8474/3	Seromucinous carcinoma
New behavior code	8441/2	Serous tubal intraepithelial carcinoma
New behavior code	8380/2	Atypical hyperplasia/Endometrioid intraepithelial neoplasia
New code	8714/3	Perivascular epithelioid cell tumor, malignant
New related term	8044/3	Small cell carcinoma, hypercalcemic type
New related term	8620/3	Adult granulosa cell tumor
New related term	8461/3	High-grade serous carcinoma

ICD-O-3 Updates - Urinary

27

Change	Cod	Description
New behavior code	8311/3	Hereditary leiomyomatosis & RCC-associated RCC
See comment	8311/3	Mt Family ranslocation renal cell carcinoma
See comment	8144/3	Enteric adenocarcinoma, adenocarcinoma intestinal type
New code	8643/1	Intratubular large cell hyalinizing sertoli cell neoplasm
New code	8054/3	Warty carcinoma
New behavior code	8071/2	Differentiated penile intraepithelial neoplasia
New related term	9364/3	Ewing sarcoma
New related term	9364/3	Peripheral neuroectodermal tumor
New related term	9364/3	Primitive neuroectodermal tumor (PNET)
New related term	8510/3	Renal medullary carcinoma
New related term	8480/3	Mucinous tubular and spindle cell carcinoma
New related term	8316/3	Tubulocystic renal cell carcinoma
New related term	8312/3	Unclassified renal cell carcinoma
New related term	8010/3	Urachal carcinoma
New related term	8572/3	Acinary (adenocarcinoma) sarcomatoid variant
New related term	9064/2	Non-invasive germ cell neoplasm
New related term	9064/2	Germ cell neoplasia in situ
New related term	9064/2	Carcinoma in situ of the testis
New related term	9064/2	Intratubular germ cell neoplasia, unclassified
New related term	9064/2	Testicular intraepithelial neoplasia
New behavior code	8316/1	Multilocular cystic renal cell neoplasm of low malignant potential
New behavior code	8860/1	Epithelioid angiomyolipoma
New behavior code	8860/1	Perivascular epithelioid cell (PEC) tumor of the kidney
New behavior code	8860/1	PEComa of the kidney
New related term	9080/3	Malignant teratoma in adults

ICD-O-3 Updates – Brain/CNS

28

Change	Cod	Description
New code	9396/3	Ependymoma, RELA fusion-positive
New code	9477/3	Medulloblastoma, non-WNT/non-SHH
New related term	9477/3	Medulloblastoma, group 3
New related term	9477/3	Medulloblastoma, group 4
New code	9478/3	Embryonal tumor with multilayered rosettes C19MC-altered
New code	9478/3	Embryonal tumor with multilayered rosettes, NOA
New related term	9400/3	Diffuse astrocytoma, IDH-wildtype
New related term	9401/3	Anaplastic astrocytoma, IDH-wildtype
New related term	9440/3	Epithelioid glioblastoma
New related term	9451/3	Anaplastic oligodendroglioma, NOS
New related term	9382/3	Oligoastrocytoma, NOS
New related term	9382/3	Anaplastic oligoastrocytoma
New related term	9509/1	Diffuse leptomeningeal glioneuronal tumor
New related term	9508/3	Embryonal tumor with rhabdoid featres
New related term	8815/0	Solitary fibrous tumor/hemangiopericytoma Grade 1
New behavior code	8815/1	Solitary fibrous tumor/hemangiopericytoma Grade 2
New related term	8815/3	Solitary fibrous tumor/hemangiopericytoma Grade 3

ICD-O-3 Updates - Other

29

Change	Code	Description
New related term	8343/2	Non-invasive follicular thyroid neoplasm with papillary-like nuclear features (NIFTP)
New related term	8343/3	Invasive encapsulated follicular variant of papillary thyroid carcinoma (EFVPTC)

Updates to Reportable Cancers List

30

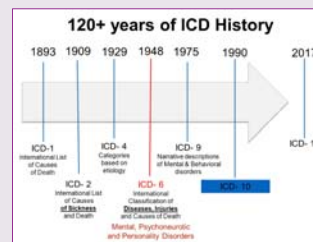
Code	Term
8507/3	Invasive micropapillary carcinoma
8983/3	Adenomyoepithelioma with carcinoma
8460/2	Serous borderline tumor-micropapillary variant Non-invasive low grade serous carcinoma
8441/2	Serous tubal intraepithelial carcinoma
8380/2	Atypical hyperplasia/Endometrioid intraepithelial neoplasia
8825/3	Low-grade myofibroblastic sarcoma
8842/3	Ossifying fibromyxoid tumor, malignant
8811/1	Myxoinflammatory fibroblastic sarcoma (MIFS)
8250/2	Minimally invasive adenocarcinoma, non-mucinous
8842/3	Pulmonary Myxoid sarcoma with EWSR1-CREB1 translocation
8311/3	Hereditary leiomyomatosis & RCC-associated RCC MIT Family translocation renal cell carcinoma (Important note: this histology IS NOT a synonym for hereditary leiomyomatosis & RCC assoc RCC also coded 8811/3)
8071/2	Differentiated penile intraepithelial neoplasia Differentiated-type vulvar intraepithelial neoplasia
8410/2	Adenocarcinoma in-situ, non- mucinous
8253/2	Adenocarcinoma in-situ, mucinous
8620/3	Adult granulosa cell tumor
9341/3	Clear cell odontogenic carcinoma
9302/3	Ghost cell odontogenic carcinoma

ICD-11 and ICD-O-4

31

- ICD-10 is nearly 30 years old (1989 release)
- ICD-11 early release in 2017 (beta version)
- ICD-11 used for Death Certificates in 2018 (NCHS)
- ICD-11 uses ICD-10 as foundation + more detail
- 100% electronic will replace paper version

- ICD-O-4 in review starting in 2017
- ICD-O-4 will be compatible with ICD-11
 - Topography
 - Morphology
 - Laterality
 - Grade
 - Stage
 - Genetic Profile
 - More



AJCC 8th ed. Implementation

32

- AJCC Staging Manual, 8th edition
- New Required for Staging Site Specific Fields
- New Format for ALL Staging Site Specific Fields
- AJCC TNM Electronic Tools - API
- AJCC TNM API Availability, Licensing and Fees

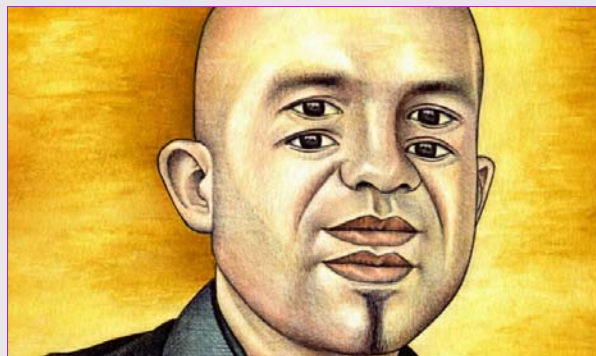
Many New Staging Data Items

33

- **Summary Stage 2018 (SS2018) – Direct-Coded Stage**
- **New EOD Coding System - SEER EOD 2018 Data Items**
 - Tumor Size Clinical
 - Tumor Size Pathologic
 - EOD Primary Tumor
 - EOD Regional Nodes
 - EOD Mets
- **New Site-Specific Data Items – old SSFs + new SSFs**
- **New Derived Stage Data Items**
 - Derived SS2018
 - Derived EOD TNM 8th T
 - Derived EOD TNM 8th N
 - Derived EOD TMM 8th M
 - Derived EOD TNM 8th Stage Group – result is a mixed stage

EDITS v18

34



Medicare Beneficiary Identifier (MBI)

35

SUBJECT: Social Security Number Removal Initiative (SSNRI)

The Centers for Medicare & Medicaid Services (CMS) is issuing this Informational Bulletin to inform states about the SSNRI. Congress passed the Medicare Access and CHIP Reauthorization Act (MACRA) of 2015 (PL 114-10) on April 16, 2015. Section 501 of MACRA requires CMS to remove Social Security Numbers from Medicare ID cards and replace existing Medicare Health Insurance Claim Numbers (HICNs) with a Medicare Beneficiary Identifier (MBI). The MBI will be a randomly generated identifier that will not include a social security number or any personally identifiable information (PII). This step is being taken to minimize the risk of identity theft for Medicare beneficiaries and reduce opportunities for fraud. To comply with this statutory requirement, starting in early 2018, CMS will issue new Medicare cards with an MBI to approximately 60 million Medicare beneficiaries, including Dual Eligibles. A HICN will still be assigned to each Medicare beneficiary will still be used for internal data exchanges between CMS and the states, but the new MBI must be used in all interactions with the beneficiary, the provider community and all external partners.

Questions

36

